



Helps
buildings
to be accessible
and inclusive
to all

DC6113 slimline transom door closer

Helps meet BS 8300 and Approved Document M

www.assaabloyopeningsolutions.co.uk/dc6113

ASSA ABLOY
Opening Solutions

Experience a safer
and more open world

The challenges of inclusive design and safety

Everyone should be able to access and use a building easily, comfortably and independently, including being able to escape in the event of a fire.

The major challenge for building owners is the balance between the closing of a door to keep a building safe and secure, and making the building accessible and inclusive to all.

DID YOU KNOW?

Many transom door closers only achieve BS 8300 and Approved Document M at EN power size 2, therefore they are not compliant on heavier doors requiring EN power size 3.

Some manufacturers wind down the door closer and spring to EN power size 1, which doesn't provide the necessary closing force and does not comply with BS 8300 and Approved Document M.

The DC6113 is the slimmest transom door closer on the market that's proven to help meet BS 8300 and Approved Document M at EN power size 3, meaning heavier doors are easier to open but still safely close.



Public buildings



Commercial Offices



Education



Retail



Leisure



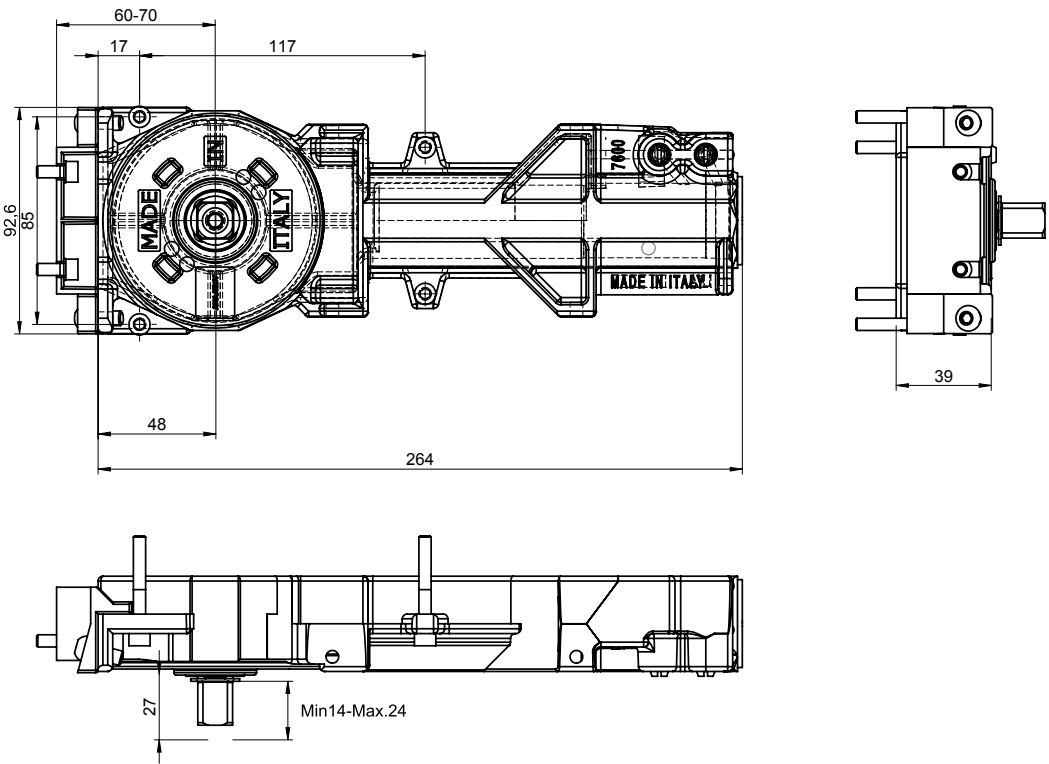
Hospital



Reasons to choose the DC6113:

- Helps meet BS 8300-2:2018 and Approved Document M ensuring inclusive design and accessibility for all users
- CE marked and tested to BS EN 1154 and BS EN 1634, offering you peace of mind on compliance
- The slimmest profile on the market that's BS EN 1154 approved, and helps to meet BS 8300 and Approved Document M at EN power size 3
- Profile is compatible with slimline aluminium profile sections
- Retro fits the Adams Rite ARC51 and uses the same accessories, so you can upgrade with ease
- High quality design and manufacturing at our own Italian facility and independently tested
- 10 year warranty for your guarantee of reliability
- Highly efficient Cam-Motion® technology gives users a rapidly decreasing opening force, which offers smooth and easy door operation for all
- Thermodynamic valves combat temperature fluctuations to provide consistent performance, regardless of temperature
- Wide range of detachable spindle sizes; 14, 18, 20, and 24mm for flexible installation
- Suitable for fire and smoke protection doors up to 60 minutes, meaning you comply with fire regulations

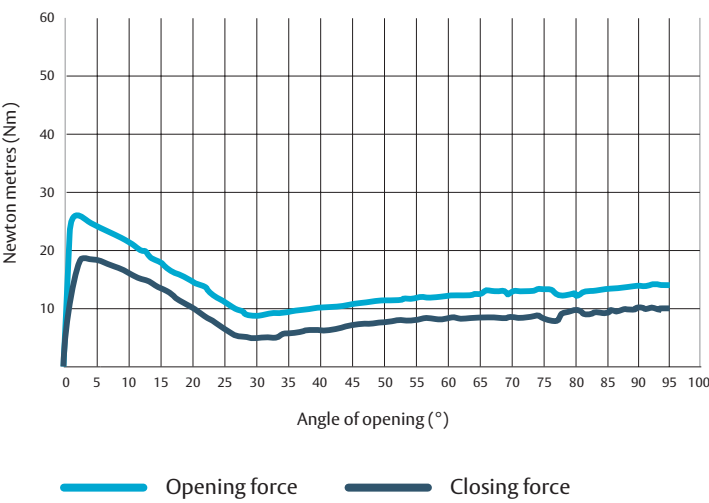
Dimensions



Specifications

Technical attributes	Specifications
Closing force	EN3
Closing speed	165° - 15°
Latching speed	15° - 0°
Max. door opening angle	165° (both sides)
Mounting method	Installation in transom profile
Suitable for single or double acting doors	Yes
Door width up to	950mm*
Height	39mm
Depth	92.6mm
Length	264mm
Spindle height	14mm - 24mm
Handling	Right and left
Suitable for fire and smoke protection doors	Yes
Certified in compliance with	EN 1154
CE marking for building products	Yes

The graph shows the opening force doesn't exceed 30Nm and the closing force achieves a minimum of 18Nm, on a 950mm wide 60kg weight door. This helps your door to meet the requirements of BS 8300, whilst ensuring EN1154 compliance at EN size 3.



BS 8300:2018
& Approved Document M



BS EN 1154
& 1634



FD60 timber
fire doors



10
YEAR
GUARANTEE

*The opening force requirements of BS 8300 can also be achieved on non-fire rated doors, outside of EN size 3.

Download our FREE white paper on the importance of inclusive design at www.assaabloyopeningsolutions.co.uk/inclusivedesign

For more information visit www.assaabloyopeningsolutions.co.uk/dc6113 or call 0845 070 6713

The ASSA ABLOY Group is the global leader in access solutions. Every day we help people feel safe, secure and experience a more open world.

ASSA ABLOY
Opening Solutions

ASSA ABLOY Opening Solutions UK & Ireland

Door Hardware Group
School Street
Willenhall
West Midlands
WV13 3PW

+44 (0) 845 070 6713
csdcomm@assaabloy.com

www.assaabloyopeningsolutions.co.uk

July 2020