

Floor Spring DC475

ASSA ABLOY

Floor Spring with
Cam-Motion®
technology and
adjustable closing
force for large or very
heavy doors

Description:

- Floor spring with adjustable closing force for large and very heavy doors
- In compliance with EN1154 size EN3-6
- 1,000,000 cycles tested
- Suitable for fire and smoke protection doors
- For single and double action door up to 300kg



Characteristics:

- Closing from 175° in both door swing directions with hydraulic control from 175°
- Two thermodynamic valves for consistent performance
- Adjustable door speed and latching speed through top regulating valves
- Back-check
- Cast Iron body
- Adjustments in all directions within the cement box
- Cement box is hot zinc plated
- Cover plates and eyelets made in polished or Satin Stainless Steel and Polished Brass
- Interchangeable spindle from 0 to 30mm
- Available without hold-open or with hold-open angle 90° and 105°

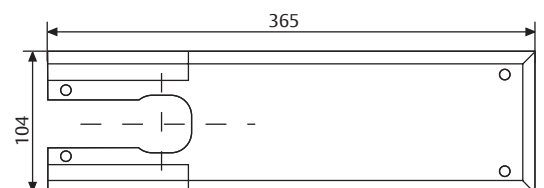
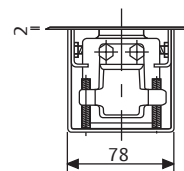
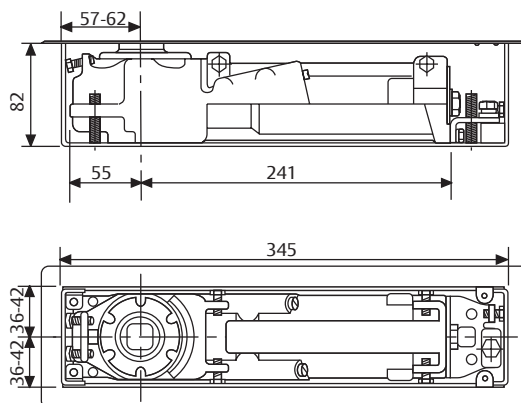
CE	ASSA ABLOY Italia S.p.A. Via Sovassa, 13 40017 San Giovanni in Persiceto Bologna - Italy				04			
	0425 DO063	EN 1154:1996+A1:2002	3	8	3	1	1	4



Speed adjustment:

1 variable closing speed 175° - 15°

2 variable latching speed 15° - 0°



Floor Spring

DC475

ASSA ABLOY

Floor Spring

DC475

Technical details:	
Adjustable closing force	EN3-6
Door width up to	1400mm
Door weight up to	300 kg
Max. opening angle	175°
Closing speed	Variable between 175°-15°
Latching speed	Variable between 15°- 0°
Back-check	Mechanical
Weight	7.3kg
Height	82mm
Length	345mm
Width	78mm
Facts for door closer	Yes, see DC860
Body adjustment within cement box	Vertical 9mm, side 6mm, front 5mm, angular 2°
DIN-direction	Left/Right-handed doors or double action
Hold-open mode	90°/105°/Non hold-open
In compliance with	EN1154
CE Marking for building products	Yes
Fire and smoke protection	Yes

Specifications:

ASSA ABLOY Floor spring DC475 featuring Cam-Motion® technology is in compliance with EN1154

- 1,000,000 cycles tested
- Closing power variable adjustable, size EN3-6, for doors up to 1400mm wide
- Closing speed, latching speed adjustable through top regulating valves
- CE approved
- 9mm height adjustable within cement box
- Suitable for left/right handed double-action doors

Finishes

- Polished Stainless Steel
- Satin Stainless Steel
- Polished Brass

Accessories

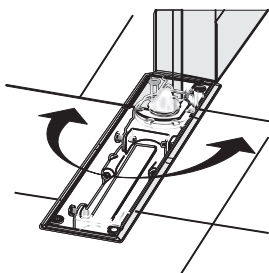
- AC115 - Reversible bottom arm Italian spindle
- AC393 - Reversible bottom arm German spindle
- AC8 - Double action top pivot
- AC375 - Double action top pivot
- AC583 - Right and left bottom arm. Socket for Italian square spindle.
- AC392 - Right & left bottom arm. Socket for German rectangular spindle.
- AC384 - Top pivot for left or right doors
- AC612 - Sealing compound for floor springs
- AC269 - Cover plate for DC475

Floor Spring DC475

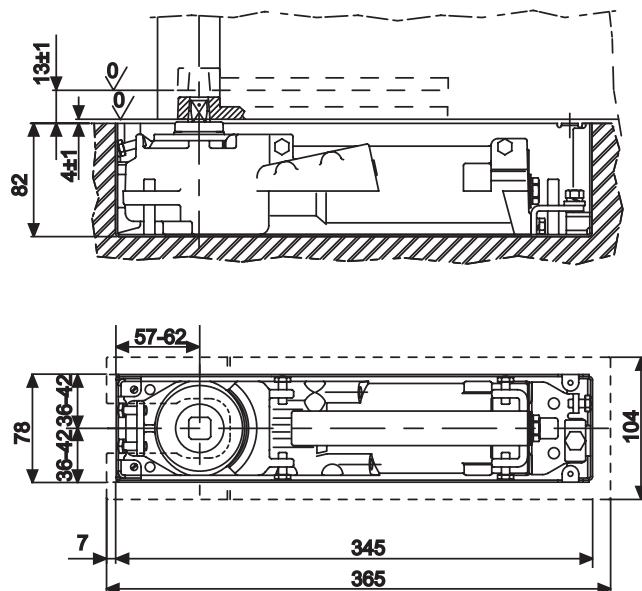
ASSA ABLOY

Floor Spring

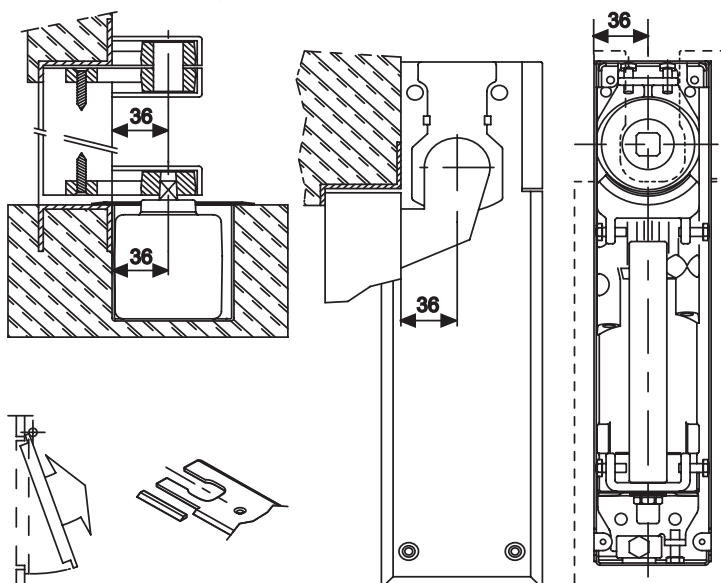
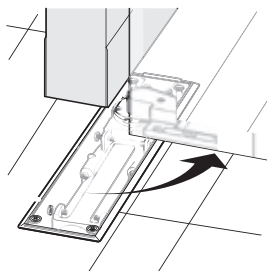
Dimensional drawings for DC475



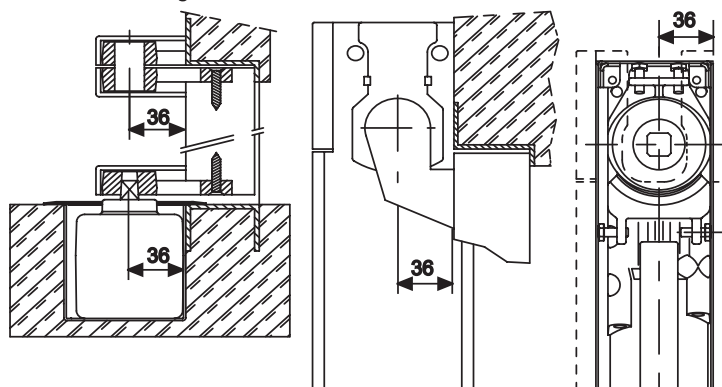
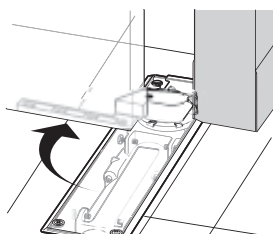
Double-action door mounting



Right-handed door mounting



Left-handed door mounting

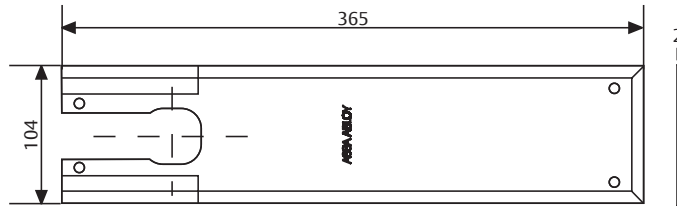


Floor Spring DC475

ASSA ABLOY

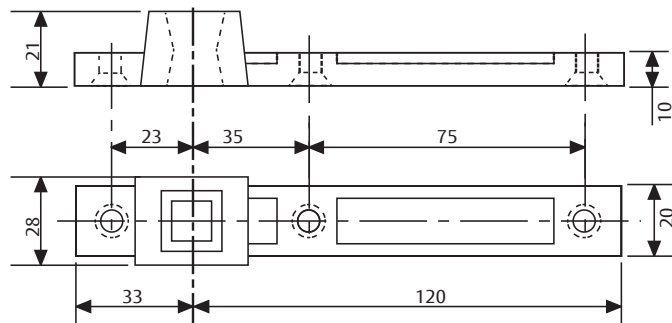
Floor Spring

Accessories for DC475



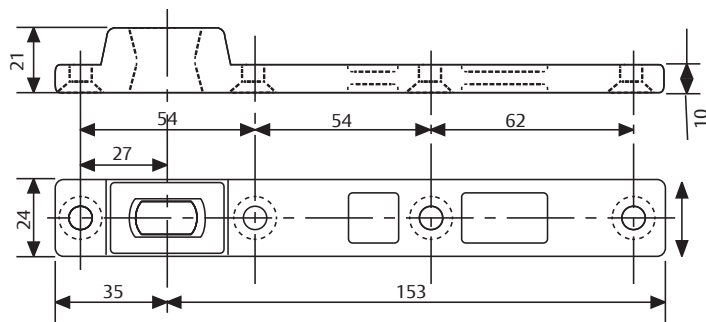
AC269

Available in Satin Stainless Steel, Polished Stainless Steel and Polished Brass.



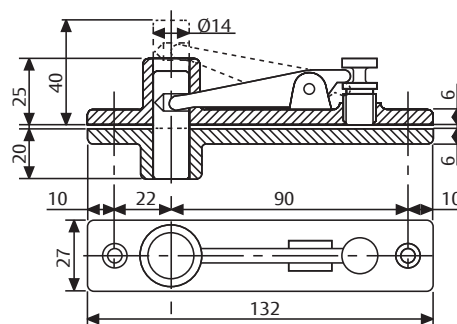
AC115

Reversible bottom arm in steel for double action doors, socket for Italian squared spindle.



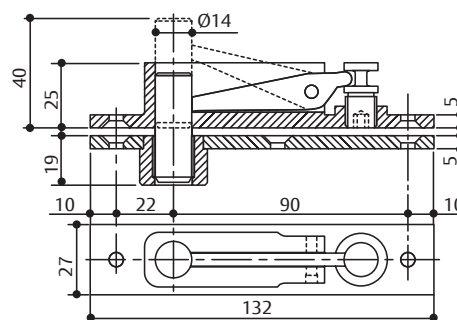
AC393

Reversible bottom arm in steel for double action doors, socket for German rectangular spindle.



AC8

Double action top pivot



AC375

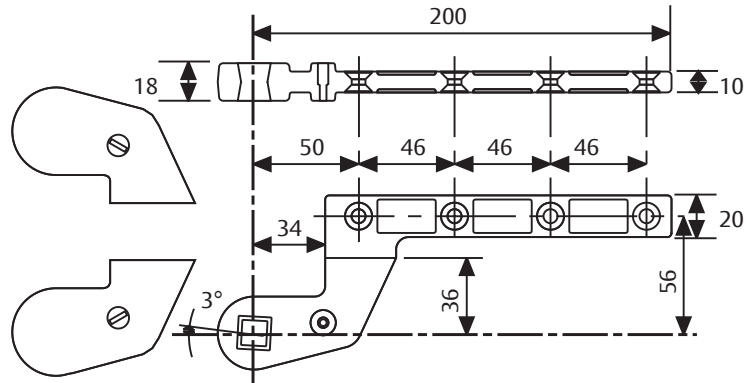
Double action top pivot in full steel with self lubricating bushing

Floor Spring DC475

ASSA ABLOY

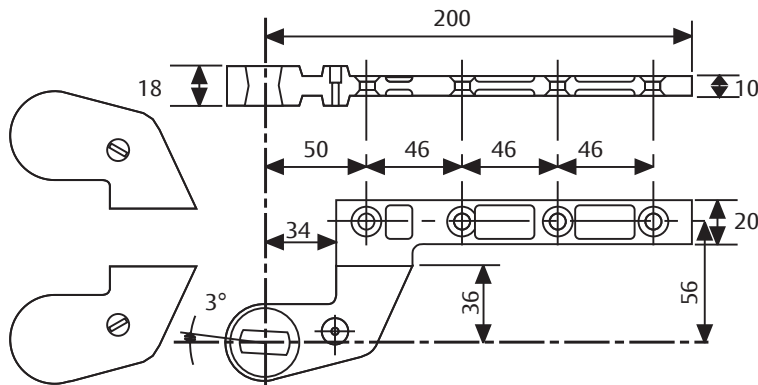
Floor Spring

Accessories for DC475



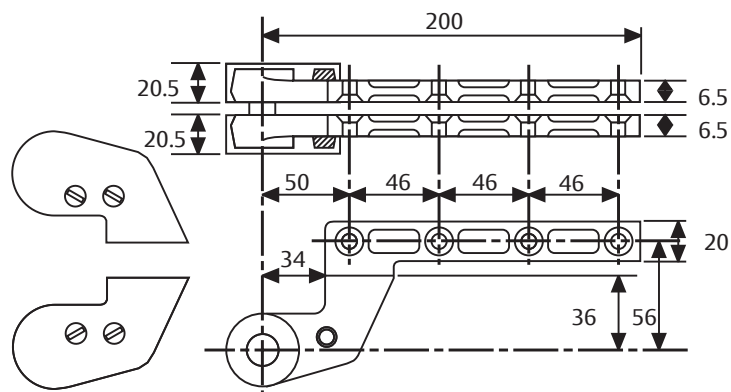
AC583

Right and left bottom arm in steel for single-action doors, 36mm offset. Socket for Italian squared spindle, Silver or Black painted.



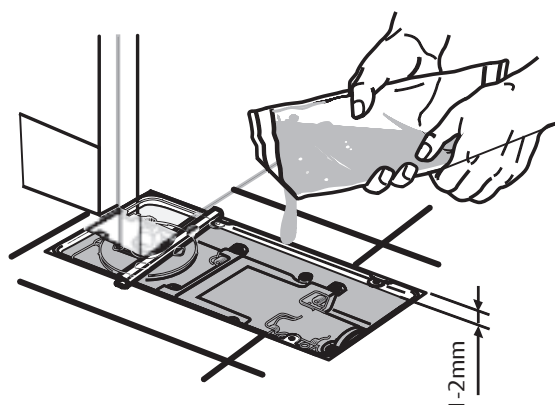
AC392

Right and left bottom arm in steel for single action doors, 36 mm offset, socket for German rectangular spindle, Silver and Black painted ABS covers.



AC384

Right and left top arm in full steel, 36mm offset with Silver or Black painted ABS cover.



AC612

Sealing compound for floor springs

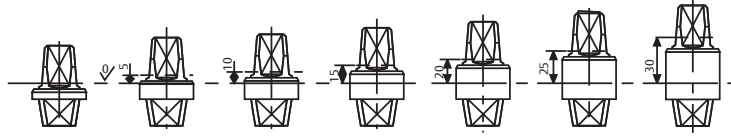
Floor Spring

DC475

ASSA ABLOY

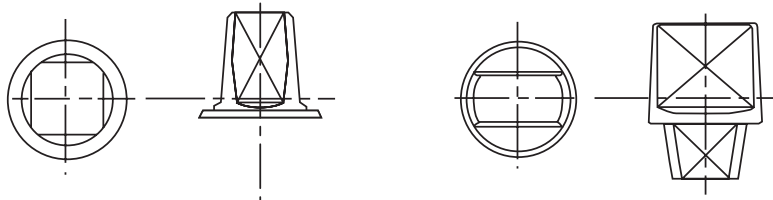
Floor Spring

Accessories and
order placement
information for
DC475



AC340	AC341	AC342	AC343	AC344	AC345	AC346	IT
AC360	AC361	AC362	AC363	AC364	AC365	AC366	GE

Detachable spindles
Italian spindle - square
shape (left image)
German spindle - flat-
conical shape
(right image)



Ordering Code

Description	Order no
Floorspring size EN 3-6 without Hold Open	DC475-----NHO
Floorspring size EN 3-6 with Hold Open at 90°	DC475-----90
Floorspring size EN 3-6 with Hold Open at 105°	DC475-----105
Floorspring size EN 3-6 without Hold Open (asymmetric CAM - DIN Right 180° opening angle)	DC475AC-R--NHO
Floorspring size EN 3-6 without Hold Open (asymmetric CAM - DIN Left 180° opening angle)	DC475AC-L--NHO
Cover Plate for DC475 SSS	CP269-----SSS
Cover Plate for DC475 PSS	CP269-----PSS
Cover Plate for DC475 PB	CP269-----PBR
Reversible Bottom Arm for double action door. German Spindle	AC393
Double Action Top Pivot	AC8
Double Action Top Pivot	AC375
Right & Left bottom arm. Rectangular German Socket	AC392
Double Action Top Pivot	AC384
Detachable German Spindle h=0mm	AC360
Sealing Compound for floorsprings	AC612