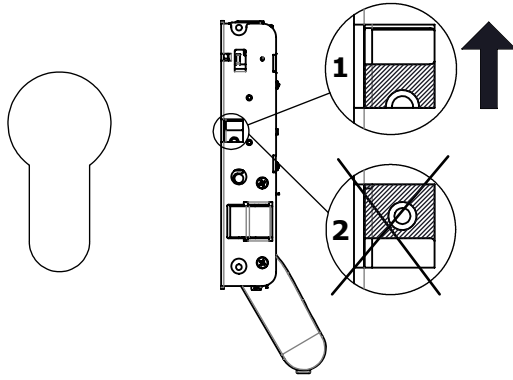


**CORNI**

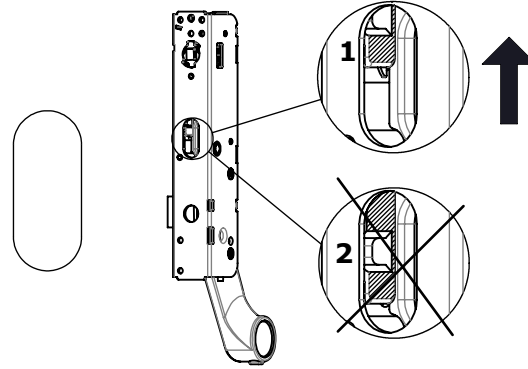
**ASSA ABLOY**

**COMPOSIT NEW**



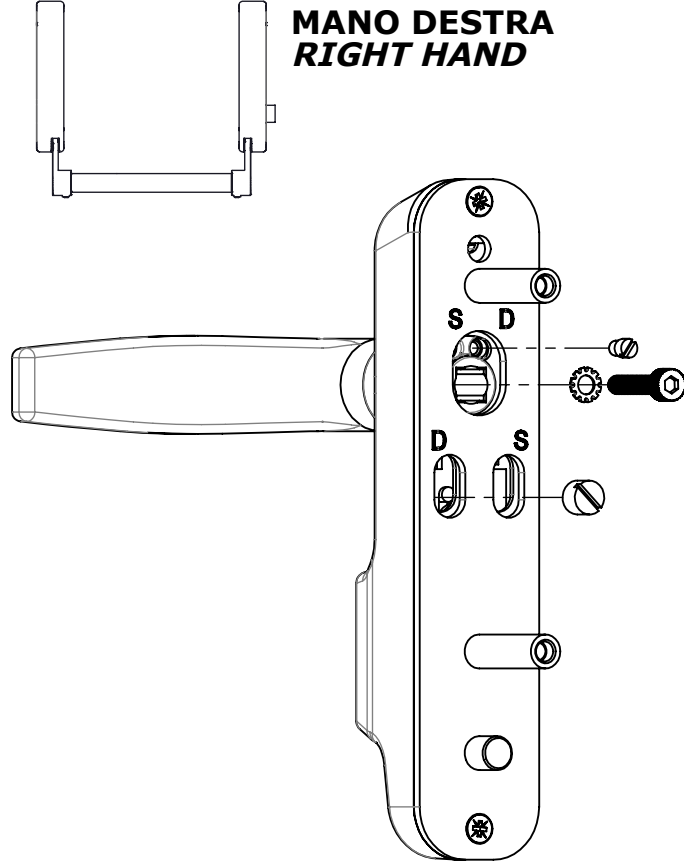
**ATTENZIONE**  
ASSICURARSI CHE  
LA SLITTA SIA IN  
POSIZIONE COME  
DA DISEGNO "1"

**WARNING**  
MAKE SURE THAT  
THE SLIDER IS IN  
POSITION AS PER  
DRAWING "1"

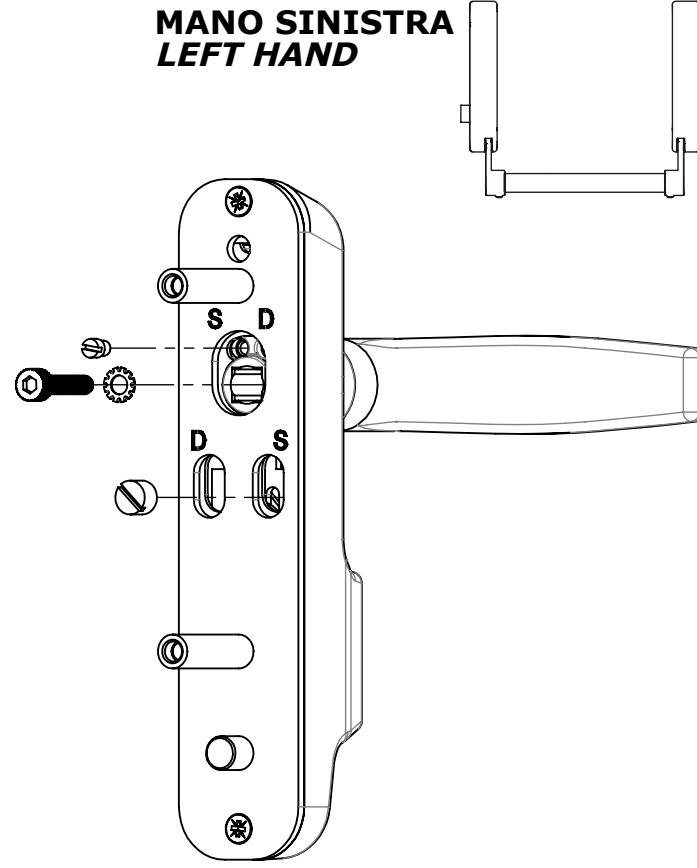


**ATTENZIONE**  
ASSICURARSI CHE  
LA SLITTA SIA IN  
POSIZIONE COME  
DA DISEGNO "1"

**WARNING**  
MAKE SURE THAT  
THE SLIDER IS IN  
POSITION AS PER  
DRAWING "1"



**MANO DESTRA**  
**RIGHT HAND**



**MANO SINISTRA**  
**LEFT HAND**

FIST.9527C Rev.B

**ASSA ABLOY Italia S.p.A.**

Via Bovaresa 13 - 40017 San Giovanni in Persiceto (BO) Italy  
Tel.: +39 051 6812411 - Fax +39 051 827486

E-mail: [info.it:openingsolutions@assaabloy.com](mailto:info.it:openingsolutions@assaabloy.com)  
[www.assaabloyopeningsolutions.it](http://www.assaabloyopeningsolutions.it)



Assistenza Tecnica  
**051 6812444**

[assistenza.technica.it:openingsolutions@assaabloy.com](mailto:assistenza.technica.it:openingsolutions@assaabloy.com)

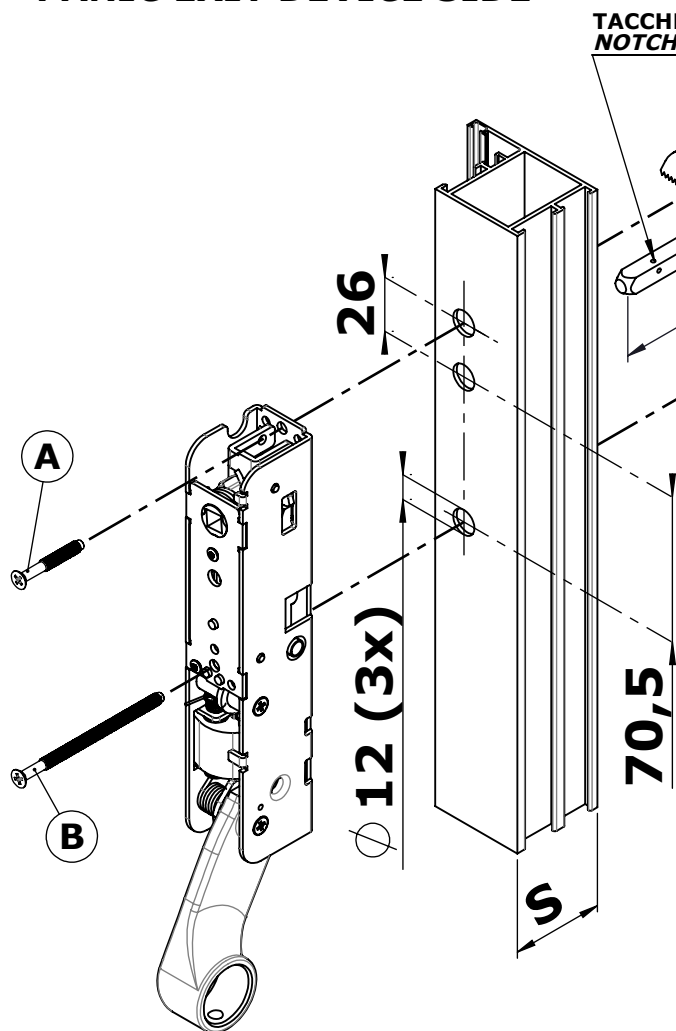


Telefonata a pagamento secondo il proprio gestore telefonico

# COMPOSIT NEW



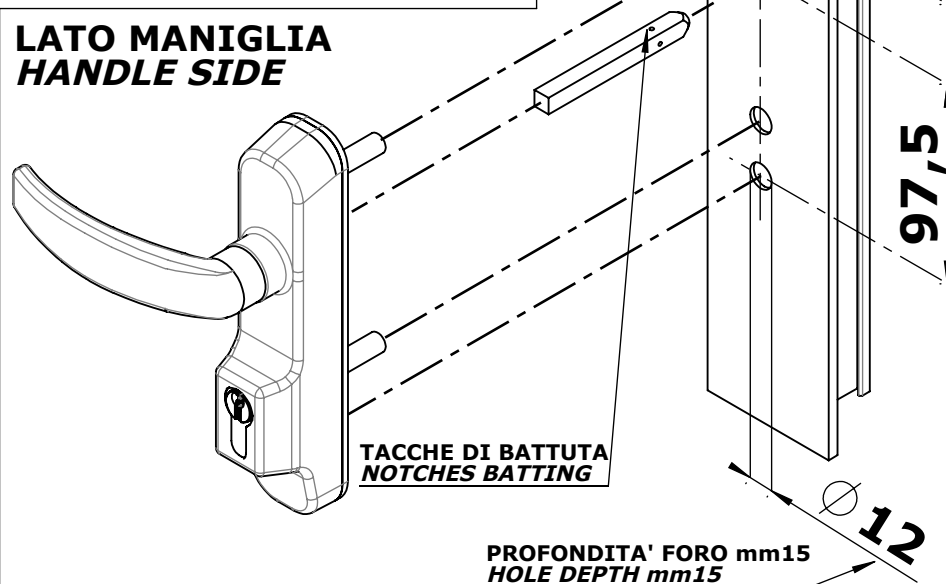
## LATO MANIGLIONE PANIC EXIT DEVICE SIDE



TACCHE DI BATTUTA  
NOTCHES BATTING

DA ESEGUIRE SOLO PER  
VERSIONI CON MICRO  
TO BE MADE ONLY FOR VERSION  
WITH MICROSWITCH

## LATO MANIGLIA HANDLE SIDE



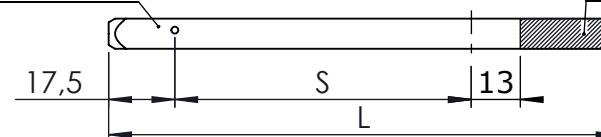
TACCHE DI BATTUTA  
NOTCHES BATTING

PROFONDITA' FORO mm15  
HOLE DEPTH mm15

## ADATTARE IL QUADRO MANIGLIA ADJUST THE SQUARE OF THE HANDLE

LATO MANIGLIONE  
PANIC BAR SIDE

LATO DA TAGLIARE  
SIDE TO BE CUT



$$L = S + 15 + 13$$

### UTILIZZO DELLE VITI DI FISSAGGIO USE OF THE FIXING SCREWS

Per Profili con Spessore "S" fino a 52 mm, utilizzare la Vite M5x35 mm in Pos. "A" e la Vite M5x75 mm in Pos. "B".

Per Profili con Spessore "S" fino a 82 mm, utilizzare la Vite M5x75 mm in Pos. "A" e la Vite M5x100 mm in Pos. "B".

For Profiles with thickness "S" up to 52 mm, use the Screw M5x35 mm in Position "A" and the Screw M5x75 mm in Position "B".

For Profiles with thickness "S" up to 82 mm, use the Screw M5x75 mm in Position "A" and the Screw M5x100 mm in Position "B".